



Customer: Aventus 8 Inc.
Address: 2500 Hollywood BLVD, STE 301
Hollywood, FL 33020
Sample ID: WHITE CHOCOLATE
Matrix: Edible
Labnumber: 24A0153-01 **Total mass or volume per unit (g or mL):** 10.3548

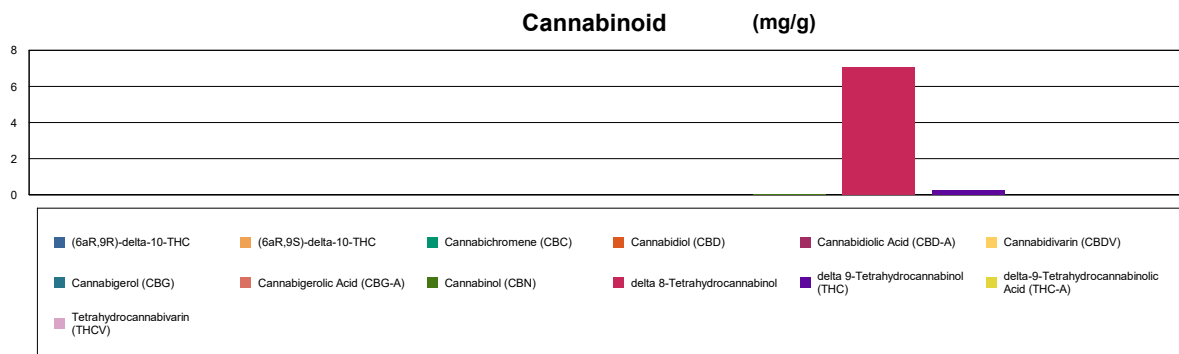
Cannabinoid Profile

Test Conditions: 17°C
Extraction Technician: SH
Analytical Chemist: SH

Extraction Date(s)	Analysis Date(s)
1/25/2024	1/25/2024

Test Method: Cannabinoid Potency by HPLC	Results			
	LOD (mg/g)	%	mg/g	mg/Edible
Cannabidivarin (CBDV)	<0.020			
Cannabidiolic Acid (CBD-A)	<0.020			
Cannabigerolic Acid (CBG-A)	<0.020			
Cannabigerol (CBG)	<0.020			
Cannabidiol (CBD)	<0.020			
Tetrahydrocannabivarin (THCV)	<0.020			
Cannabinol (CBN)		0.002	0.016	0.168
Cannabichromene (CBC)	<0.020			
delta 9-Tetrahydrocannabinol (THC)		0.03	0.260	2.70
delta-9-Tetrahydrocannabinolic Acid (THC-A)	<0.030			
delta 8-Tetrahydrocannabinol		0.71	7.05	73.0
(6aR,9S)-delta-10-THC	<0.030			
(6aR,9R)-delta-10-THC	<0.030			
Cannabinoids Total		%	mg/g	
Max Active THC (delta-9-tetrahydrocannabinol)		0.03	0.26	
Max Active CBD		<0.002	<0.020	
Total Cannabinoids		0.73	7.33	

Following USDA guidelines on uncertainty, Altitude Consulting's uncertainty is calculated to be +/- 5% for all cannabinoids using a coverage factor of 2 (95% confidence interval). Measurement uncertainty has not been factored into reported values. Blank results indicate the compound was below the limit of detection.



Gary Brook - Laboratory Director - 1/29/2024

Reporting Limits will vary based on sample extraction weight used for the analysis.

The results of this report are based solely on the sample submitted and cannot be reproduced. Decision Rule: Measurement uncertainty is not accounted for in the reported values.

Results are based solely on calculated numbers. Altitude Consulting makes no Statements of conformity. **Pesticide, metal, and microbial analyses are subcontracted to ISO**

17025 laboratories.